

Press to exit full screen

Inside Outside

THE INDIAN DESIGN MAGAZINE

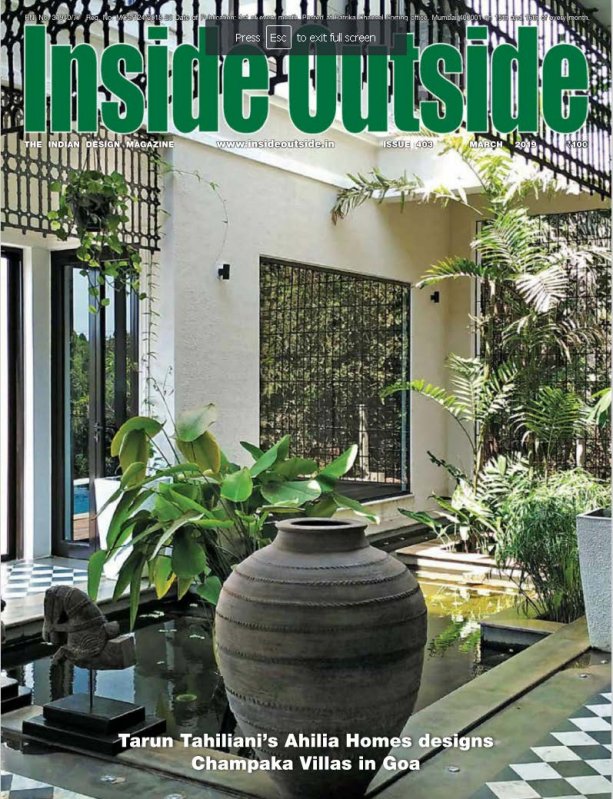
www.insideoutside.in

ISSUE 403

MARCH

2019

₹100



**Tarun Tahiliani's Ahilia Homes designs
Champaka Villas in Goa**



38

o contents



- 13 Editor's Letter
- 18 Textile Art Sunita Bali
- 22 Retail Therapy
- 110 Snippets
- 112 Access Point
- 114 Advertisers' Directory

26 VILLAS FASHIONING – FROM HAUTE COUTURE TO HOMES

Topline fashion designer Tarun Tahiliani confesses to 'loving architecture. If I wasn't a fashion designer, this is what I would have selected. Interior design has the potential to link fashion and lifestyle organically.'

Text: Amita Sarwal Photographs courtesy: Ahlia Homes

38 BUNGALOW A MELLOW CONFLUENCE

A three-level holiday home in Kochi for a family that lives in Japan has been designed by studio TAB. The aesthetic sensibility recalls their local roots, while carrying the influence of the Far East in its minimalistic oeuvre, says Devyani Jayakar.

Photographs: Justin Sebastian

50 APARTMENT THE DUAL HOUSE

GRCA, a young firm headed by Architect Gaurav Roy Choudhury, transforms a standard abode into a dream haven, sited in the greenest and most central part of Bengaluru. Apoorva Gorhe finds out more about the tale behind its inimitable decor and efficient design.

Photographs: Rimi Sen

60 OFFICE MONOCHROMATIC MINIMALISM

The site context was a 4th floor space in a corporate building. The prime challenge was to make do with unusually angled walls and yet leave no dead spaces.

Text: Amita Sarwal Photographs: Tejas Shah

68 SERVICED VILLAS AMEYA – LIMITLESS NIRVANA

For French couple Istvan and Véronique d'Elassy, their Ameya Serviced Villa on the shores of Vembanad Lake in Kerala has been a five-year-long love affair.

Text: Amita Sarwal Photographs: K. J Mathew



DISCOVER THE SECRET BEHIND THE ELECTRICAL SYSTEM OF SOME OF THE LARGEST FACTORIES



Blue Star has offered **MEP** solutions for over a decade, with expert electrical solutions provided across a wide range of projects. The TCS office in Hyderabad, Tata Power grid in Delhi, Apollo Hospitals in major cities across

India and Dr Oetker in Rajasthan are just a few of the 250 projects we have executed in India. So whether it's electrical or the complete range of MEP solutions, talk to us and get superior project delivery every single time.





o contents



78 BUNGALOW HOME AWAY FROM HOME

J House by the architect Kapil Agarwal is a weekend home which offers a contemporary style of architecture. The respect shown for open spaces has successfully managed to catch the fancy of the beholder.

Text: Devina Chandola Photographs: Bharat Aggarwal

88 BUNGALOW THE GARDEN HOUSE

Pune-based architects and interior designers Mita and Sanjeev Joshi design the architecture and interiors of a bungalow with the aim to give it a connect with the outdoors.

Photographs: Atul Kanetkar

102 PUBLIC PLAZA TRAFFIC ISLAND TRANSFORMED

The redevelopment of Ranga Bhavan Chowk, Solapur, sees the re-appropriation of existing, unused land into a public space. It helps fill a social void to create a space where people can enjoy being outdoors.

Text: Brinda Gill

Photographs: Atul Kanetkar, Atul Haldankar and EBC Originals

112 RESTAURANT BEAUTY AND THE FEAST

Sutra Designs, presided over by Architect Vikram Singh Solanki, designs Club Patio, a quirky and multi-hued European restaurant, sited at Mansarovar, Jaipur.

Text: Ar Apoorva Gorhe Photographs: Dev Jaatrana



WHEN PERFECTION
MEETS PASSION,
QUALITY BECOMES
OUR REASON TO
EXIST.

Wonder Cement Is The First Company
In North India To Use POLAB A Fully
Automatic Quality Control Lab

Quality attributes for Wonder Cement

- High Compressive Strength
- Low Alkali Content
- Low Chloride Content
- Sulphate Resistant
- Low Heat of Hydration
- Optimum Particles Size Distribution
- Batch-to-Batch High Consistency

**WONDER
CEMENT**
EK PERFECT SHURUAAT

WONDER CEMENT LIMITED

Central Marketing Office: 5th Floor, Celebration Mall, Bhuvana, Udaipur (Rajasthan) - 313 004

Tel: +91-294-3006400 | Email: feedback@wondercement.com

www.wondercement.com | Toll Free No.: 1800 843 8686



116 | Outside March 2019

The Dual House



apartments



Gaurav Roy Choudhury

FACT FILE

Area

8000 sq ft

Location

Kumara Park East, Bangaluru, India

Duration

April 2014 - September 2016

Design Team

Gaurav Roy Choudhury, Sushil Kumar, Sachin Gujar

Contractors

Interiors Espania, Deepak Gaekwadi, Gopa Suthar

GRCA, a young firm headed by Architect Gaurav Roy Choudhury, transforms a standard abode into a dream haven, sited in the greenest and most central part of Bengaluru. Apoorva Gorhe finds out more about the tale behind its inimitable decor and efficient design.

PHOTOGRAPHER: RIM SEN

View from the living room



Symmetrical view of the living room from the lower floor



View of the 'dance' area from the sit-out area in the upper floor

The contrasting personalities of a couple and their three children have been inventively brought together under one roof, resulting in the 'Theory of Dualism'. The owner waited all his life to reside with his family in his own residence that would reflect their characters, and provide them with a feeling of security.

The brief given to Gaurav was grand yet intimate; showy yet humble; exuberant yet restrained and illustrated the duality between the traits of husband and wife. The former is a successful, jovial and outgoing businessman and the latter is a quiet, introverted and gentle housewife. He says: 'The reality of one nature feeding the other also hit us, as they fed off

each other having found a very relaxed equilibrium. The Dual House is an experiment in creating these co-existing and almost symbiotic dualities in space, in language and in materials.'

'The language of the house became more intricate, as a play on duality as well as a conscious effort to counter-balance "expensive" materials and replaces them with "crafted" materials. This way, the high budget assigned to the house went to the right people – the artisans and the craftsmen,' says Gaurav.

Initially, the couple had bought two apartments, one above the other but now they wanted to combine and fashion them into one. Though this project is an interior one, Gaurav and his team were given a free hand to



View of the Living Room from the bridge



Another view of the 'dance' area.



The breakfast table in the kitchen area.



The den at the lower level

dismantle all the walls and create a single apartment. The brief demanded five bedrooms comprising one master and one guest, one each for their three children. It also required a big kitchen, dining, a formal and an informal living room. A library was very important to them since most of their time is spent in the same (with an AV room), where the family regularly gets together.

The whole volume of the house that sits on the fourth and fifth floor of an apartment is divided into an invisible grid, derived from the central open spaces and the floor



View of the "dance" as it wraps around the cut-over in the living room.

heights. This grid is used in every detail of the house as a parametric and proportioning system.

At a spatial level, the team of GRCA reconfigured the two apartments by moving the more public spaces of the house towards the north, where the soft light through the balconies overlooks the property. These spaces are linked by two geometrical cut-outs in the central bay combined with the floors.

The lower floor towards the north has the formal living room and the den while the upper floor contains the more

family-centric AV room and the study.

The cut-outs are also made to unite a perceivable "grand" central volume of this house. The split between these cut-outs remains more like a bridge as it spans through this majestic dimension. The first volume from the entry includes the staircase. All the private spaces, the bedrooms and the bathrooms, including the kitchen are pushed into the south, where they are combined with the mass of the lift and staircase block of the apartment.

The formal living room with its double height space is the



The study.

heart of the house. The laser cut metal tree is the backdrop as it penetrates through the volume of the house. It also acts as a screen for the library on the upper level. The hanging lights and the structural steel weave into the bridge above, symbolizing the core of this structure and the joy it holds. The apartment has very eccentric niche kind of designs in the wall which we

converted into cubboards and storage," states Gaurav. These are made in veneer, but also coloured in a light grey, to keep the colour palette neutral. Initially, the walls were very basic and looked tedious in the bedroom but started to become more dynamic as soon as they moved into the common spaces. They developed into light walls with the patterns



The guest bedroom.



The guest bathroom.



The master bedroom from the entry at sunset.

that articulate the invisible lattice of the house.

The exclusive essentials of the house – the furniture and lights – have been sourced from China. Some of the lighting has also been customised and fabricated by GRCA squad.

The duality of materials and their dance is the central concept of the house. All the elements including the backdrops show variations of the same theme. The intertwining between the elements, gaps, lines, and materials dictate diverse expressions in different rooms. The idea of each space has been inspired from its inhabitants and their

characters.

The flooring is a blend of the existing Italian marble and the new wooden flooring throughout the house. To accentuate the geometries in the rooms the use of the existing floor covering was maximised and the new wooden flooring was also added. Only the upper open spaces have wooden floors to create a feel of seamlessness.

The colour scheme of the house has been kept eclectic as per the space. 'Since Italian marble flooring was already done in parts of the house by the builder, we had to weave its cream colour into the scheme of things. We tried

to balance the wood, creams and the browns with a mix of whites, and greys to make the palette more neutral. The interior photos, pictures and loose furniture were looked at to bring in a pop of colour where it was necessary,' says Gaurak.

All the five bathrooms have individualistic characters and stories to recite. The original bathrooms were broken and pushed into a central space which now has glass windows looking out. All the bathrooms are made to look outdoors, with a small pebbled internal or external area towards the glass, to brighten each of them.



The master bathroom



The pooja room

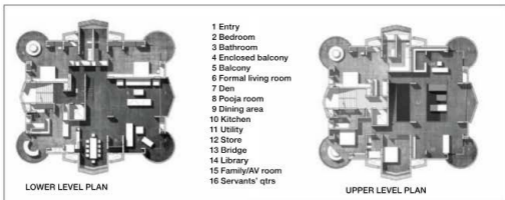


The master bedroom from the window side

apartments



The dining room.



It took two years to complete 'The Dual House' due to the minutest details involved. 'Our overall experience was entirely different from any other project of ours. It was

a back and forth with the client with a very intense design period,' Gaurav concludes.

This abode is bestowed with many inimitable features, but a cohesive experi-

ence and proportioning system holds them all together. Its storyline is immersive and local, but a subtle global tie-up in experience makes it exceptional. **0**